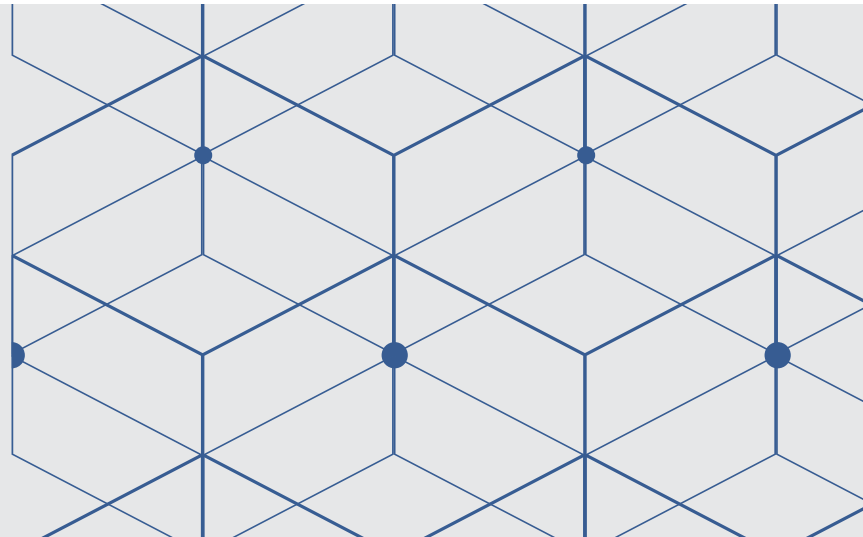




Greenlam
LAMINATES

HD Gloss COLLECTION





401 HDG
Black



291 HDG
Electric Blue

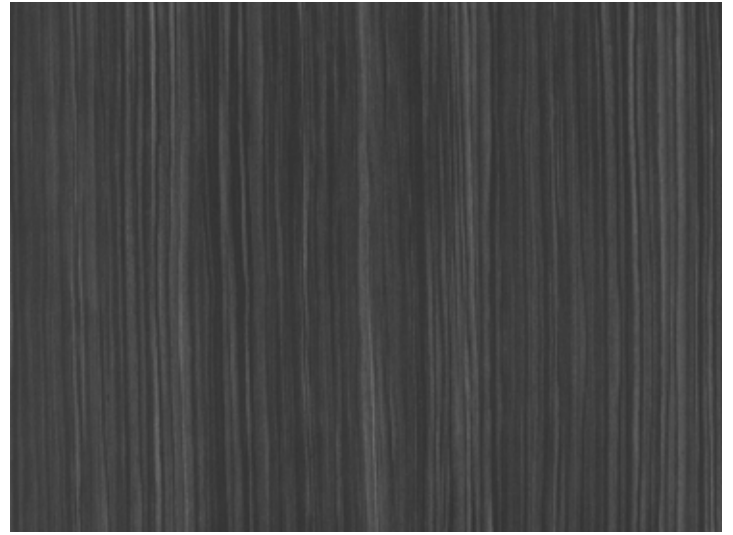


101 HDG
White

HD GLOSS



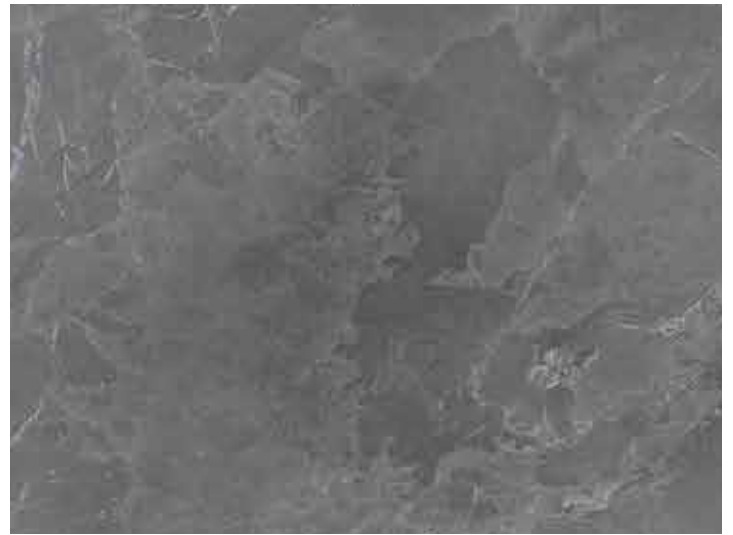
5380 HDG
(BLACK FOREST)



782 HDG
(MAKASSAR WOOD)



5083 HDG
(SOUTHERN OAK)



5572 HDG
(GREY MARQUINA)



5571 HDG
(CRÈME MARQUINA)



5344 HDG
(TURQUOISE TEAK)

HD GLOSS



5376 HDG
(TEXAS RODEO)



5349 HDG
(AUSTIN WALNUT)



681 HDG
(CHERRY SETA)



5337 HDG
(MALAY TEAK)



5333 HDG
(NORDIC WALNUT)



777 HDG
(SUMATRA TEAK)

HD GLOSS



749 HDG
(SAPELE)



5522 HDG
(HORIZONTAL EBONY)



608 HDG
(AMERICAN WALNUT)



5523 HDG
(HORIZONTAL SANTOS)



5082 HDG
(LOUISIANA OAK)

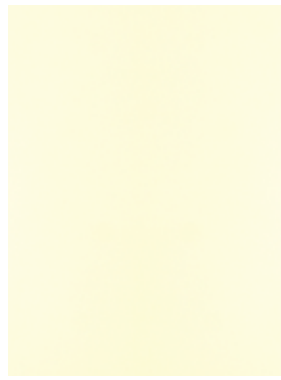


5524 HDG
(SAMARA OAK)

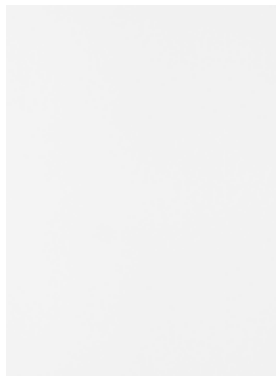
HD GLOSS



107 HDG
(WOOL)



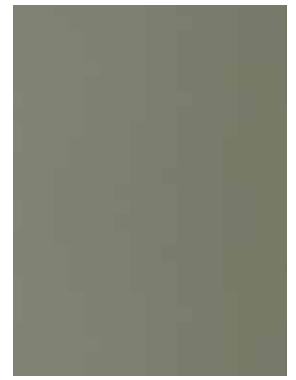
124 HDG
(MYSORE IVORY)



101 HDG
(WHITE)



270 HDG
(SILVER GREY)



261 HDG
(DARK GREY)



141 HDG
(BEIGE)



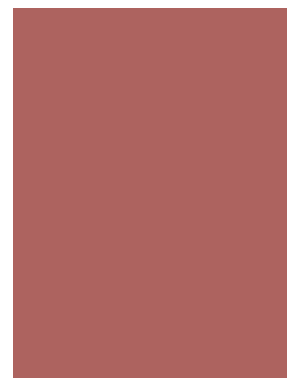
146 HDG
(OATMEAL)



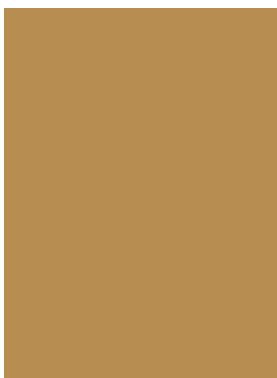
181 HDG
(CHOCOLATE)



458 HDG
(NOIR CURRENT)



138 HDG
(TERRACOTTA)



137 HDG
(MUSTARD)



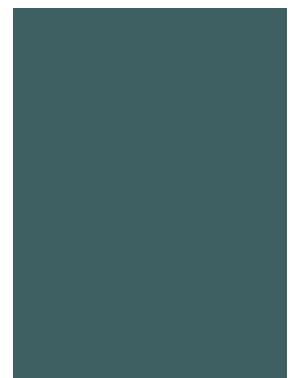
217 HDG
(LIGHT ORANGE)



207 HDG
(DIVINE YELLOW)



251 HDG
(BRIGHT GREEN)



364 HDG
(EMERALD)



173 HDG
(BARBIE PINK)



204 HDG
(RED DYNASTY)



201 HDG
(MAROON)



291 HDG
(ELECTRIC BLUE)



401 HDG
(BLACK)

HD GLOSS

It is a superior gloss laminate crafted with technologies that make it stunning and at the same time highly durable. Apt not only for vertical but horizontal application too, these laminates are here to turn your interiors into perfect settings for life.

WHAT MAKES HD GLOSS A SUPERIOR CHOICE:



Superior Gloss Level – With its best-in-class sheen, Greenlam HD Gloss laminates have a gloss metre reading of over 112 when tested at a 60° angle.



MAR-Resistant – Over prolonged use, micro scratches damage the appearance of gloss surfaces. Thanks to the MAR resistance feature in Greenlam HD Gloss laminates, these surfaces retain their shine for the longest time. Apt for surfaces prone to scratches, they are ideal for both horizontal and vertical application areas. With 96% gloss retention as per the ASTM:D6037-96 (Reapproved 2008) Test method, they offer a superior MAR resistance in the category of HD Gloss Laminates.



Scratch-Resistant – Resistant to regular scratches, these HD Gloss laminates are sturdier than other laminates.



Abrasion-Resistant – Abrasion is the regular wear and tear that damages the decorative layer of the laminate and spoils its appearance. Designed to stand the daily rough usage, these laminates offer two times better abrasion resistance than ordinary high gloss laminates. With 800 revolutions as per the EN438-2-10 Test method, it is incredibly durable and sustains the beauty of laminates for longer periods.



Antibacterial Laminates – Now health is always assured with Greenlam HD Gloss laminates as they come with an antibacterial shield. The entire range is manufactured with SAFEGUARD PLUS technology, a revolutionary development that inhibits the growth of common bacteria up to 99%.



Heat-Resistant – Laminates that are exposed to heat are more likely to damage their decorative surfaces. But with Greenlam HD Gloss laminates you don't have to sweat about them. These laminates can withstand excessive amounts of heat, making them ideal for use in kitchens or dining areas. Technically, be it dry heat of 180°C or wet heat of 100°C, these surfaces endure both while maintaining their lustre.



Wide Range – Offering attractive solid colours, wood grains, and abstract design patterns to choose from, Greenlam HD Gloss collection will surely leave you spoilt for choice.



Available in Postforming – Opening a world of design possibilities for you, Greenlam HD Gloss laminates are available in postforming too. Be it kitchen shutters, shelves, or cabinets, these appealing gloss laminates will adorn any space, beautifying your interiors instantly.

TECHNICAL SPECIFICATIONS



CHARACTERISTICS	CONFORMS TO EN 438- 2 & 3: 2016 STANDARDS			
	TEST STANDARD	UNIT	SPECIFIED VALUES	GREENLAM HD GLOSS VALUES (HGS)
Density	EN ISO 1183 -1	g/ cm ³ (min.)	1.35	1.40
Nominal Thickness	EN 438-3 - 6.3	mm	1.00	0.95-1.06
Thickness Variation	EN 438-3 - 6.3	mm (max.)	± 0.10	± 0.06
Length & Width	EN 438-3 - 6.3	mm	+10mm; -Nil	Conforms
Edges Squareness	EN 438-3 - 6.3	mm/M	Deviation 1.5 (max.)	Conforms
Edges Straightness	EN 438-3 - 6.3	mm/M	Deviation 1.5 (max.)	Conforms
Flatness	EN 438-3 - 6.3	mm/M	Deviation 60 (max.)	Conforms
Dimensional Stability at Elevated Temperatures				
Machine Direction	EN 438-2 - 17	% (max)	0.55	0.25
Cross Direction		% (max)	1.05	0.45
Resistance to Impact with Small Diameter Ball	EN 438-2 - 20	N (min.)	20	25
Resistance to Immersion in Boiling Water	EN 438-2 - 12	Rating (min.)	3	≥ 3
Resistance to Surface Wear, Initial Point	EN 438-2 - 10	Rev. (min.)	150	300
Resistance to Stains				
Group 1 & 2	EN 438-2 - 26	Rating (min.)	5	5
Group 3		Rating (min.)	4	≥ 4
Resistance to Scratching	EN 438-2 - 25	Rating (min.)	3	≥ 4
Resistance to Dry Heat at 160° C	EN 438-2 - 16	Rating (min.)	3	≥ 4
Resistance to Water Vapour	EN 438-2 - 14	Rating (min.)	3	≥ 3
Resistance to Wet Heat at 100°C	EN 438-2 - 18	Rating (min.)	3	≥ 3
Light Fastness (Xenon-Arc Light)	EN 438-2 - 27	Rating (min.)	4 to 5	≥ 5
Volatile Organic Compounds (VOC) Emission	ISO 16000-9 UL2818	Class Certification	- GREENGUARD GOLD	A GREENGUARD GOLD
Antibacterial Efficacy & Activity				
Reduction in 24 hours	JIS 2801-2012	%	95.0 (min)	upto 99.99
Activity after 24 hours		Log Reduction	2.0 (min)	Exceeds
Antifungus Efficacy & Activity				
Growth after 28 days	ASTM G-21-2015	Rating	1	0 (No Growth)

Above tests are applicable to all Greenlam laminates except metal or foil laminates

HGS = Horizontal General Purpose Standard

Rating : 1= Surface damage, 2= Severe appearance alteration, 3=Moderate Change, 4=Slight Change visible from certain angles, 5=No change

Bacteria Tested= 1. Pseudomonas Aeruginosa, 2. Enterococcus Faecalis, 3. Candida Albicans, 4. Pseudomonas Aeruginosa, 5. Escherichia Coli, 6. Klebsiella Pneumoniae, 7. MRSA (Methicillin Resistant Staphylococcus Aureus), 8. Salmonella Enterica

Fungus Tested= 1. Aspergillus niger, 2. Penicillium funiculosum, 3. Gliocladium virens, 4. Chaetobium globosum 5. Aurobasidium pullulans

Laminates featured in this catalogue are in 1220x2440x0.8mm unless otherwise stated

Warranty: Whereas Greenlam Products are manufactured thoroughly to standards, the nature of the application procedure is beyond our control. The values given above are to the best of our knowledge but without liability/warranty, expressed or implied.

Trademark : GREENLAM®, the GREENLAM® logos and Safeguard™ Plus are registered trademarks of Greenlam Industries Ltd. or its subsidiaries

Change of Specification: The company reserves the right to change the specifications at any time without prior notice, it is recommended that you request actual samples prior to specification.

The company reserves the right to change the specifications at any time without prior notice, it is recommended that you request actual samples prior to specification.

Greenlam provides FSC® Certified product (Certificate No. SCS-COC-003328), on request



Global Headquarter:

2nd Floor, West Wing, Worldmark 1, Aerocity IGI Airport Hospitality District, New Delhi - 110037.

Tel: [91 11-4279-1399] | Email: info@greenlam.com | www.greenlam.com

/greenlamlaminate /greenlam01 /greenlam_laminates/ /greenlamIndustries